

# Prahova Valley 2011



**RSDT**  
ROMANIA SCENERY DESIGN TEAM

Add-on for Microsoft Flight Simulator 2004  
Prahova Valley 2011 V 1.01 - 25 August 2011

## Prahova Valley 2011 - The Scenery

„Prahova Valley 2011” is a photoreal scenery that covers almost a 60km<sup>2</sup> area of the Carpathian mountains in Romania and it’s ideal for VFR flights. With this scenery you can enjoy the beauty of the Romanian Carpathian mountains aswell visit all nearby landmarks. All textures are for summer and daytime.

Landmarks included in the scenery: Peles castle, Caraiman cross, Romanina sphinx, Biserica neagra, Turnul Alb, Brasov sign, Costila rely.

Praova Valley 2011 scenery is an ongoing project so we will place new landmarks for you to explore.

### Legal stuff

By installing this software the user acknowledges the following Terms Of Use:  
**“Prahova Valley 2011 scenery ” is a freeware scenery!!!** Do not attempt to obtain any kind of benefit by selling this product or his contents! **“Prahova Valley 2011 scenery”** is a trademark of R.S.D.T.® and is protected by international copyright law. Distribution and uploads to any other website of this package or any part of it is strictly prohibited without the authors permission. Distribution of modified files is not permitted without explicitly written consent of the authors.

## Compatibility

Prahova Valley 2011 scenery is meant only for Microsoft Flight Simulator 2004. Installing this addon on other flight simulator platforms has not been tested. We are not responsible for any harm done to your PC if this addon is installed on other flight simulator platforms.

Prahova Valley 2011 scenery is compatible with Romanian Mesh (romanianmesh.zip) found on [www.avsim.com](http://www.avsim.com)

## System Requirements

Minimum hardware requirement	Recommended hardware requirement
CPU: 2 GHz	CPU: 3 GHz
RAM: 1 GB	RAM: 3 GB
Video Card: 256 MB RAM	Video Card: 512 MB RAM

## Installation

Before installing Prahova Valley 2011 scenery make sure that all previous mesh addons for Romania have been desinstalled from your FS2004 Scenery Library, then:

**1) Download and install Stefan Braunewell’s Freeware “Romanian Mesh” (romanianmesh.zip) found on [www.avsim.com](http://www.avsim.com) or [www.rsdt.ro](http://www.rsdt.ro)**

- By not installing this particular mesh you will see all custom made landmarks floating in the air or sunken into the ground ☹

2) Exit Microsoft Flight Simulator

- 3) Move Prahova Valley 2011 folder from Prahova Valley 2011.zip into your main Addon Scenery folder of Microsoft Flight Simulator 2004
- 4) Start Microsoft Flight Simulator 2004
- 5) Go to Settings then go to Add Area
- 6) Add Prahova Valley 2011 to the library
- 7) Exit (Restart) Microsoft Flight Simulator 2004
- 8) Have FUN

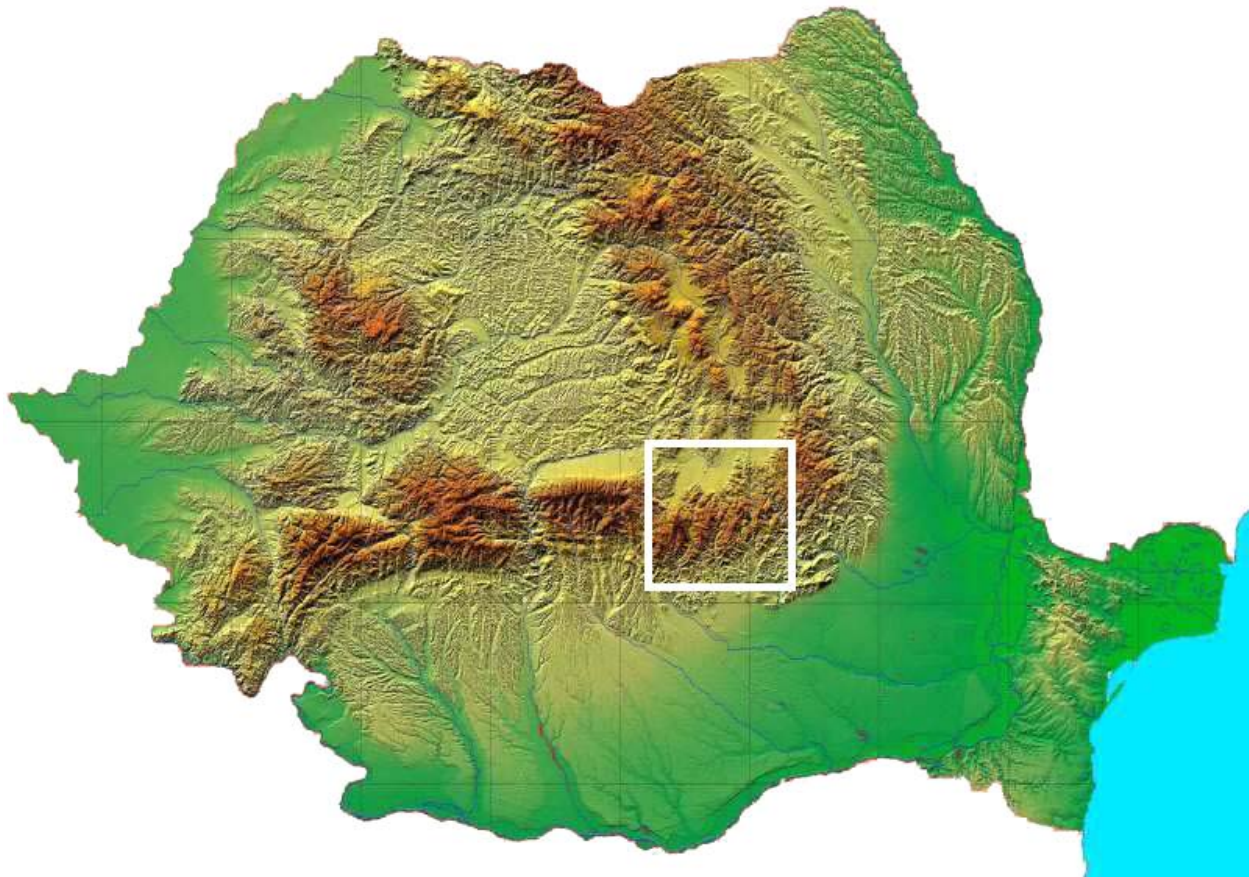
### **Debugging and suggestions**

For debugging and suggestions you can send an email to “vishzu” at [vishzu@yahoo.com](mailto:vishzu@yahoo.com) or you can visit [www.rsdt.ro](http://www.rsdt.ro) and leave a message

### **Credits**

“FLO” - Scenery Designer

“Vishzu” - Scenery Designer







**RSDT**  
ROMANIA SCENERY DESIGN TEAM